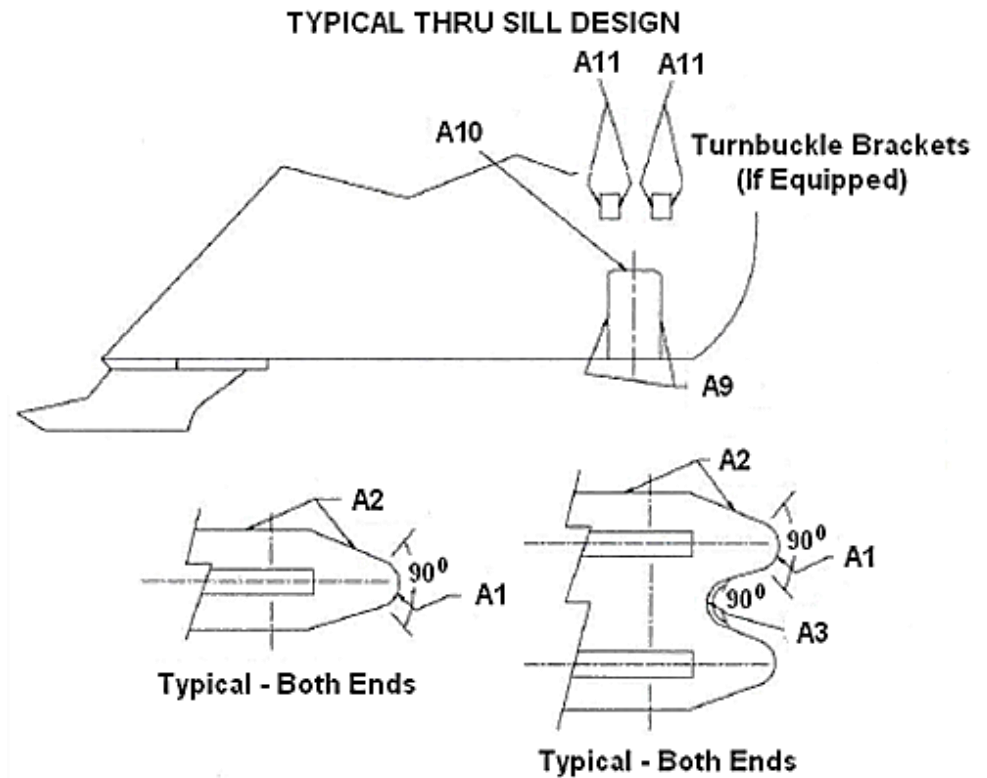


Location Designations:

Pad-to-Tank (Designated by 'A' codes)

Code	Description	Location	Inspect
A1	Transverse pad-to-tank weld.	AR, AL, BR, BL	90° around end of weld(s).
A2	Longitudinal pad-to-tank weld.	AR, AL, BR, BL	Last 12" of weld to A1.
A3	Transverse pad-to-tank weld (wide pad design).	A, B	90° around end of weld.
A9	Bolster pad-to-tank transverse weld.	ARO, ARI, ALO, ALI, BRO, BRI, BLO, BLI	Full length of weld.
A10	Top of bolster pad longitudinal weld	AR, AL, BR, BL	Full length of weld.
A11	Turnbuckle bracket pad to tank weld	AR, AL, BR, BL	Full length of weld.

Sketch/Description:



Use the "Generic Body Bolster." template for body bolster defects.  
 Use the TCID "Record Shell/Sill Damage" button for:

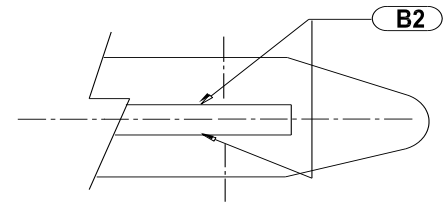
- All parent metal defects.
- All structural defects outside the scope of these template

Location Designations:			
Anchor-to-Pad Welds (Designated by 'B' codes)			
Code	Description	Location	Inspect
B2	Longitudinal termination of tank anchor mounting bracket.	AR, AL, BR, BL	Last 6" of weld to termination.

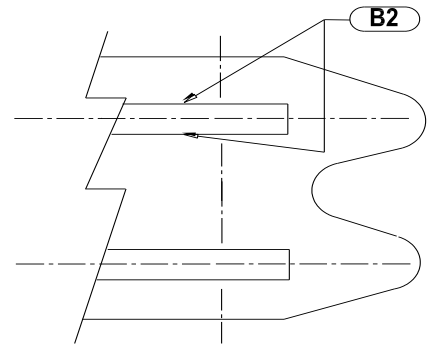
Sketch/Description:

Use the "Generic Body Bolster." template for body bolster defects.  
 Use the TCID "Record Shell/Sill Damage" button for:

- All parent metal defects.
- All structural defects outside the scope of these templates.



Typical - Both Ends



Typical - Both Ends

Location Designations:

Sill Welds and Cutouts (Designated by 'E', 'TAP', 'ASA, CO codes)

Code	Description	Location	Inspect
TAP	Sill anchor mounting.	AR, AL, BR, BL	Full length of weld.
CO	Sill Cutout (if applicable).	Top and Sides of Sill.	Full Perimeter

Use the "Generic Body Bolster." template for body bolster defects.  
 Use the TCID "Record Shell/Sill Damage" button for:

- All parent metal defects.
- All structural defects outside the scope of these templates.

